

# BOMIDI

BETTER LIFE, BETTER ME.

ORRO HOME GENERAL TRADING LLC

☎ 00971-42868279

✉ [Info@bomidi.me](mailto:Info@bomidi.me) / [Info@orrohomedubai.com](mailto:Info@orrohomedubai.com)

📍 Office 409, One Deira Mall, Deira, Dubai, UAE

# BOMIDI PRODUCT BROCHURE 2025



BETTER LIFE, BETTER ME.

**BOMIDI** was born from a simple yet powerful belief:  
that a better life begins with better experiences—quiet, clean,  
intelligent, and personal.

In a world filled with noise and complexity, we believe that good  
design and smart technology should help us slow down, breathe  
deeper, and live more meaningfully.

From the freshness of the air around you, to the effortless rhythm  
of your home, and the moments of self-care that empower your  
confidence—BOMIDI is here to simplify the everyday, and elevate  
the ordinary.

Our product lines cover **Air Aesthetics, Smart Home Companions,**  
**and Beauty & Wellness Devices**, each thoughtfully crafted to  
blend functionality with style, technology with empathy, and  
convenience with care.

We don't just create appliances.

We design experiences that make you feel better, look better, and  
live better.

Better life, better me is not just our slogan. It's a commitment to  
the people we serve—those who choose to live well, love smarter,  
and care deeply.







## Core Values And Concepts

### "Quality"

Premium materials, rigorous craftsmanship—every product meets the highest standards.

### "Smart Innovation"

Intuitive tech for effortless living. Smarter designs, simpler experiences.

### "Sustainable Future"

Eco-conscious engineering. Powerful performance, minimal environmental impact.

# GLOBAL LAYOUT

As of now, the BOMIDI brand has covered over 40 countries world-wide, including Thailand, the Philippines, Malaysia, Indonesia, Dubai, Iran, Algeria, Oman Pakistan, Kyrgyzstan, Kuwait, Syria, Iraq, Russia, South Korea; U.S.A, Miami, Colombia, Mexico, Brazil, Paraguay, Chile, Peru, Bolivia, Panama and other countries and regions.

40+  
Countries

60+  
Products

3000  
Operation Teams

110  
Product Inspection  
Processes





# CONTENTS.

- 01 Air Aesthetics Series
- 02 Smart Home Companions
- 03 Beauty & Wellness Devices

# Air Aesthetics Series



Let every breath be a delight.

At BOMIDI, we believe that air is more than a necessity for survival—it's a reflection of your quality of life.

The Air Aesthetics Series integrates purification, humidification, and fragrance diffusion, blending advanced air technology with sensory enjoyment to create spaces where every breath feels refreshing.

From crisp freshness to gentle humidity and subtle scent, we bring a sense of calm and comfort into your everyday surroundings—transforming air into an experience.



# Guardian of Household Health

Employs dynamic sterilization technology with Ag<sup>+</sup> silver ion antimicrobial coating and H13 HEPA filter, achieving 99.9% removal of bacteria/viruses. WiFi control, real-time PM2.5 monitoring, 3-color air quality indicator. 10-second filter replacement, 33dB low noise, 360° whole-room purification.

Air Purifier



## MODEL: AP01

### Product feature

- Child lock function
- WIFI remote control
- H13 antibacterial filter
- Photocatalytic dynamic disinfection



### Parameter:

Model:AP01	Dimension: 260*260*500mm
Voltage:100-240V	CADR: 500m³/h
Power:36W	N.W.:3.6kg
Frequency:50-60Hz	Color: White



# Made for Pet-Loving Homes



3D airflow duct + turbo dual intake system for strong pet hair capture. Removable outer electrostatic cotton layer; modified activated carbon filter eliminates odors/bacteria; top UVC sterilization lamp. 8-speed modes with smart PM2.5 detection for auto-adjustment. App monitoring, chew-resistant power cord + child lock. Ideal for pet owners and allergy sufferers.

Air Purifier(Pets Friendly)



## MODEL: AP02

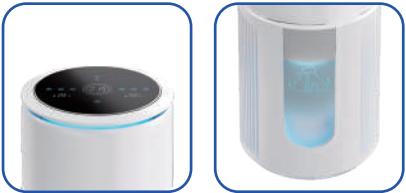
### Product feature

- Child lock function
- Capture pet dander & hair
- HEPA H13 replaceable filter
- Built-in UVC sterilization lamp



### Parameter:

Model:AP02	Dimension: 271*271*515mm
Voltage:100-240V	CADR: 450m³/h
Power:36W	N.W.:4.5kg
Frequency:50-60Hz	Color: White





# Turn Mist Into Comfort



1L capacity with auto water-refill system for extended humidification. Features 4 modes, 3-speed ultrasonic high-frequency misting, silent operation with UV sterilization. Wide opening for easy cleaning, built-in aroma pad and RGB ambient lighting. Includes infrared remote + timer function. Combines humidity control, fragrance diffusion, and ambient lighting in one unit.

## Air Humidifier



### MODEL: UH06

#### Product feature

- Colorful light design
- Intelligent 3-Speed timing
- Automatic water pumping
- Anti-Dry burning function



#### Parameter:

Model:UH06	Dimension: 190*190*240mm
Capacity:1L	Materials: ABS+PP
Voltage:220-240V	N.W.: 1140g
Frequency:50-60Hz	Color: White



# Aroma Elegance. Just Plug In



Efficiently covers 30 m<sup>2</sup> spaces with 30% performance enhancement. Compact one-hand grip design features wall-mountable installation for space efficiency and a straight-pull oil replacement mechanism for effortless operation. Suitable for multi-scenario use in bedrooms, kitchens, and conference rooms. Offers 3 adjustable fragrance intensity levels. Rigorously tested with 20,000 plug-in cycles for secure, reliable placement.

## Waterless Diffuser Machine for Room



### MODEL: AD01

#### Product feature

- Plug-in design
- 3 timer modes
- Rotatable plug
- APP & button control



#### Parameter:

Model: AD01	Dimension: 110.5*101.3*60.9mm
Bottle: 60mL	Materials: Plastic (PP)
Voltage: AC 100-240V	N.W.: 280g
Power: 1.5W	Color: White/Black





# Redefine Aromatic Living



Equipped with dual-fluid atomization technology to diffuse refined 0.5  $\mu$ m-level fragrance particles. Features Bluetooth/touch screen dual controls, long-lasting battery, essential oil level display, and smart timer functionality. Delivers professional-grade, enduring fragrance solutions for commercial spaces like hotels and lounges.

## Waterless Diffuser Machine for Home



### MODEL: AD02

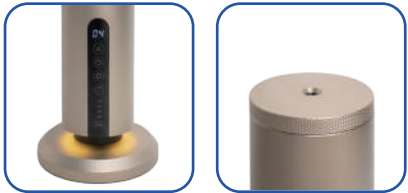
#### Product feature

- APP & touch panel control
- Time programming
- Intuitive touch panel
- Whisper-quiet operation



#### Parameter:

Model: AD02	Dimension: 340.7*117.5*117.5mm
Bottle: 120mL	Materials: Aluminum
Voltage: DC12V	N.W.: 1.35kg
Power: 4W	Color: Gold/Black





# Drive in Fragrance. Arrive Refreshed

Designed for premium venues and car interiors. Incorporates patented dual-fluid atomization system for 360° fragrance dispersion at 43dB ultra-quiet operation. Intelligent auto start/stop syncs with vehicle ignition. Features top-mounted controls + charging port, 3 fragrance modes, and 20-hour runtime from a 2000mAh lithium battery.

## Waterless Diffuser Machine for Home and Car



### MODEL: AD03

#### Product feature

- Easy to use
- Moving sensor
- 3 scenting levels
- 3 colors ambient light



#### Parameter:

Model: AD03	Dimension: 69.4*69.4*129.5mm
Bottle: 15mL	Materials: Aluminum+PP
Voltage: 5V (Type-C)	N.W.: 314g
Battery capacity:2000mAh	Color: Gold/Black





# Smart Home Companions

Intelligent support for a simpler, cleaner life.

Life is not a collection of chores—it's a series of moments worth enjoying.

The Smart Home Companions Series incorporates vacuuming, floor care, cooking, and home environment management into smart, intuitive solutions that act like thoughtful assistants in your household.

Quiet, efficient, and designed to relieve daily burdens, these companions give you back your time and energy—so you can focus on what truly matters: living well.





# Auto-Empty Powerful Vacuum, No Bending



28kPa brushless motor with washable HEPA filter. 3-speed adjustment + LED smart indicators. Multi-head set for deep cleaning; compatible with all floor types. Dust-free contact with auto-emptying design. 7x2000mAh Li-ion battery for extended runtime. 270° flexible hose eliminates bending.

## Cordless Stick Vacuum With Self-Emptying Station



### MODEL: Airwave A1

#### Product feature

- Smart indicator light
- Self-emptying means
- Long crevice tool+2 In 1 brush head
- Collapsible design, bend-free operation



#### Parameter:

Model: Airwave A1	Dimension: 269*207*288mm
Voltage: 100-240V	Dust cup capacity: 0.8L
Power: Brushless Motor 400W	N.W.: 6.2kg
Frequency: 50-60Hz	Color: White





# Effortless Cleaning Expert

Vacuum Cleaner



## MODEL: S9

### Product feature

- High power motor
- 5m power cord length
- Washable filter, use it after dry
- Long crevice tool+2 In 1 brush head



### Parameter:

Model:S9	Dimension: 255x165x1040mm
Voltage:220V	Dust cup capacity: 900mL
Power:500W	N.W.:1.5kg
Suction:17kPa	Color: White、Black、Blue



Detachable rotary dust cup enables hands-free emptying. Includes floor brush and flat nozzle for multi-surface cleaning. Steel tube hook for cord storage. Cyclonic filtration + precision filter traps micro-dust, releasing clean air. Manual washable dust cup. AC powered plug-and-play operation.



# All-Powerful Cleaning Pioneer

Steam Mop



## MODEL: SM01

### Product feature

- Smart touch screen control
- A wide range of accessories
- Water shortage protection function
- Large capacity removable water tank



### Parameter:

Model:SM01	Dimension: 251*146*1103mm
Voltage:220V	Water tank capacity: 380mL
Power:1200W	N.W.:2.92kg
Frequency:50-60Hz	Color: White



High-power steam generator (110°C) with interchangeable nozzles for handheld/push/strap modes. Smart touchscreen temperature display. Detachable floor brush supports aroma disinfection liquid + carpet attachment. Auto water-shortage prevention. Large tank with water filtration ensures efficient cleaning.



# Deep Clean in One pass

## Square Spin Mop



**BOMIDI**

## MODEL: M20

### Product feature

- Hidden handle
- Removable water bucket
- Clean and dirt separation
- Upper and lower drain outlet



### Parameter:

Model:M20

Water purification area:3L

N.W.:1.887kg

Color:White gray

Innovative clean/dirty water separation system maintains fresh water circulation. Integrated main brush, side brush, and roller scraper with triple spray jets for high-intensity cleaning. Detachable clean water tank, tank brush, and dual drainage ports simplify maintenance. Foldable mop plate + hidden handle enable vertical storage and effortless corner cleaning.





# One-Touch Brew. Pure Italian Flavor.

The CM01 coffee machine integrates three brewing modes: Nespresso/Dolce Gusto capsules and coffee powder, and is equipped with a dedicated adapter. The 1400W powerful motor ensures stable extraction, the touch panel + LED indicator light is intuitive to operate, and the manual/automatic shutdown mode can be switched flexibly. The 700ml detachable water tank has a self-cleaning function, and the detachable drip tray improves practicality.

## Capsule Coffee Machine



### MODEL: CM01

#### Product feature

- 20 bar pump pressure
- Self-cleaning function
- Multifunction compatibility
- 700 mL removable water tank



#### Parameter:

Model:CM01	Dimension: 301*115*257mm
Voltage:220-240V	Water tank capacity:700mL
Power:1400W	N.W.:about 2.8kg
Frequency:50-60Hz	Color: Black





# Experience The Perfect Brew



This compact 0.5L smart kettle features dual heating & keep-warm modes with precision temperature control for ideal results. Designed with a 360° rotating base and tea infuser compatibility, it's perfect for your daily ritual. Built-in overheat protection ensures safety, while the space-saving design fits seamlessly into any modern kitchen or office.

Electric Kettle



## MODEL: EK01

### Product feature

- Anti-scalding handle
- Led light digital display
- Safe and healthy material
- Intelligent temperature control



### Parameter:

Model:EK01	Dimension: 170*135*244mm
Voltage:220-240V	Capacity:500ml
Power:900-1100W	N.W.:About 0.9kg
Frequency:50/60Hz	Color: White



# Freshness Unleashed Anywhere

Portable Juice Blender



## MODEL: JB01

### Product feature

- 6-leaf blade
- IPX7 waterproof
- 3-speed adjustment
- LED light digital display



### Parameter:

Model:JB01	Dimension: 134*95*225mm
Voltage:7.4V	Capacity:450mL
Power:65W	N.W.:600g
Battery capacity:3000mAh	Color: Blue



Food-grade materials. 3000mAh Type-C battery. 600g ultra-light body (450ml capacity). 20,000rpm motor + 6-blade stainless steel cutter (35-second juicing). Digital display with pause function. Easy cleaning.



# One-Click Crushing



BJ01 blender is made of food grade material, safe and reliable. 1000W high power, easy to crush ice, nuts, hard ingredients. Multi-speed adjustment, suitable for different ingredients. 304 stainless steel blade, more even cutting, avoid jamming.

Blender



## MODEL: BJ01

### Product feature

- Easy to clean
- Material safety
- Clear measuring marks
- 1000W high power motor



### Parameter:

Model:BJ01	Dimension: 190*180*395mm
Voltage:220-240V	Capacity:1.25L
Power:1000W	N.W.:3.75kg
Frequency:50/60Hz	Color: Silver





# Hyper-Speed Ice Production

## Chill Unlimited



One-tap self-cleaning. Switchable ice sizes for diverse beverages. App remote control; rapid ice production in 6-8 minutes. Infrared sensors auto-stop at low water/ice-full. 60-ice storage capacity. Commercial-grade efficiency.

Ice Maker



### MODEL: IM01

#### Product feature

- Touch buttons
- APP remote control
- Low noise operation
- Adjustable ice cube size



#### Parameter:

Model:IM01	Dimension: 285x223x293mm
Voltage:220V	Water storage capacity:1.3L
Power:105W	N.W.:6kg
Frequency:50-60Hz	Color: White、Gray、 Blue





# Oil-Less Revolution: Crisp, Cook, Conquer

Air fryer



## MODEL: AF01

### Product feature

- Adjust the machine tilt
- Double transparent window
- Multiple modes to meet more needs
- Three dimensional circulation heating



### Parameter:

Model:AF01	Dimension: 385x353x347mm
Voltage:220-240V	Capacity: 6L
Power:1700W	N.W.:5.7kg
Frequency:50-60Hz	Color: White



360° auto-rotation + high-speed air circulation for 3D even heating. 45° flip design enables multi-surface cooking. Oil-separation system eliminates fumes; explosion-resistant window + touch controls. 1-hour timer & 10-hour preset for versatile cooking.

# Kitchen Cooking Tool



The HB1201 hand blender has a variety of accessories to meet your various needs. One-touch operation, easy to handle a variety of ingredients. 15000RPM high-speed motor, easy to crush vegetables, meat, etc., no particles and smoother. The blade can be directly rinsed with water, which is super easy to clean.

## Hand Blender



### MODEL: HB1201

#### Product feature

- Easy to clean
- Easy to operate
- Various accessories
- Multi-speed adjustment



#### Parameter:

Model:HB1201	Material:304 stainless steel
Voltage:220-240V	Speed:15000RPM
Power:1200W	N.W.:1.43kg
Frequency:50/60Hz	Color: White、 Black





# Ice Cooling Technology



Dual cooling/ice-compress modes. 0.5-second instant chill + 8m/s wide-angle airflow. 4000mAh battery (15hr runtime), 100 stepless speeds. LED power display + Type-C charging during use. Compact premium design.

Mini Fan



## MODEL: MF01

### Product feature

- Turbo cyclone
- 100 wind speed levels
- Cold air ice compress
- High temperature protection



### Parameter:

Model:MF01	Dimension: 59*60*185mm
Voltage:3.7V	Display:LED
Power:12.5W	Net weight:233g
Battery capacity:4000mAh	Color:White、 Black、 Purple





# Cool Comfort. Stylish & Silent.



DF03 uses a transparent frame with 7 blades. It has a simple and stylish appearance, is easy to place, and does not take up too much space. The LED digital display function can intuitively display the fan's operating status, and the wind speed can be adjusted in 100 levels for easy operation. It uses a brushless silent motor. The noise generated during operation is extremely low, which can create a quiet and comfortable environment for you.

## Small Desktop Fan



### MODEL: DF03

#### Product feature

- Strong wind
- Smart LED display
- 1-100 gear adjustment
- Large capacity battery



#### Parameter:

Model:DF03	Size:139.6*79*167.1mm
Input voltage:5V /2A	Battery capacity: 3000mAh
Rated power:4.5W	N.W.:418g
Gear:1-100 gears	Color: Black、Yellow、Blue、Green、Purple





# Wrinkle Vanisher Compact Professional

16g/min high-pressure steam removes wrinkles residue-free. Dual horizontal/hanging modes with foldable storage. Single temp control adapts to fabrics. 140mL tank reduces refills; 20-second heat-up. Professional-grade efficiency.

## Handheld Garment Steamer



### MODEL: GS01

#### Product feature

- Powerful steam
- 140mL petal water tank
- One-touch temperature control
- Handheld folding garment steamer



#### Parameter:

Model:GS01	Dimension:200*125*85mm
Voltage:220V	Water tank capacity: 140mL
Power:1200W	Net weight:700g
Frequency:50Hz	Color:White





# Beauty & Wellness Devices

Feel better. Look better. Be better.

True beauty begins with intentional self-care.

The Beauty & Wellness Series focuses on intelligent personal and beauty devices—from fascia therapy and oral hygiene to hair styling and daily grooming—bringing professional-level care into your daily routine.

From morning rituals to evening wind-downs, these devices enhance your health, confidence, and sense of self—helping you feel your best, every single day.





# Pocket-Sized. Muscle-Ready



230g ultra-light body, portable for on-the-go use. 3000rpm motor with 8kg thrust. 7mm deep amplitude targets muscle soreness. 5 smart intensity modes adapt to multi-scenario use. Type-C fast charging enhances endurance. Professional-grade performance for high-intensity scenarios.

## Massage Gun



### MODEL: M1

#### Product feature

- Compact body
- Intelligent timing
- 5 kinds of massage head
- relieve muscle stiffness



#### Parameter:

Model: M1	Dimension:86*47*145mm
Rated Voltage: 11.1V	N.W: about 0.5kg
Rated Power: 25W	Color:Black/White/Green/Pink
Battery Capacity: 2500mAh	Timing: 10min



# One Tap. Dual Therapy Power

One-tap hot/cold mode switching. 3200rpm dual-axis high-torque motor with 5 adjustable frequencies (2000-3200rpm). 2000mAh detachable Li-ion battery (120min runtime). Type-C charging. Real-time LED display for power/gear status. Triple safety protection (overheat/overload/short-circuit).

## Massage Gun



### MODEL: MG2

#### Product feature

- Long battery life
- Display battery level
- 5 levels adjustable
- Extra hot & cold compress massage head



#### Parameter:

Model: MG2	Timer: 10 minutes
Rated voltage:7.4V	Mode: 2 modes
Rated power:25W	N.W.:1250g
Battery capacity:2000mAh	Color:Silver gray



# Broad-Spectrum Relief

## Four Head Massager



### MODEL: MG3

#### Product feature

- Multiple mode functions
- Large area for relaxation
- Vertical deep hitting power
- Strong power four head massager



#### Parameter:

Model:MG3	Dimension:320*195*132mm
Voltage:11.1V	N.W.:1.09kg
Power:70W	Color:White Gray
Battery capacity:2500mAh	Timer: 15 minutes

Ergonomic quad-head dual-grip design enhances coverage for efficient massage. Anti-misoperation buttons. 5 variable-speed modes (up to 2200rpm) with high-torque dual-axis drive. 2500mAh battery + Type-C fast charging (210min+ runtime). LED display for real-time power/gear monitoring. Smart overload protection.





# Next-Level Neck Recharge



5D oversized massage nodes mimic human fingertip kneading. 48° ergonomic angle precisely contours neck. 5-second heat-up (45-50°C constant temp) for multi-area application. Adjustable strap with buckle; foldable & portable. 70min runtime per charge. <48dB quiet operation + removable washable cover. 1.25kg lightweight body.

## Kneading Neck Massager



### MODEL: MP2

#### Product feature

- Wireless use
- Flexible massage head
- Hot compress relaxation
- Multi-level massage intensity



#### Parameter:

Model:MP2	Dimension:
Rated voltage:5V	N.W.:1250g
Rated power:26W	Color:White Gray
Battery capacity:1800mAh	Timer: 10 minutes





# Saviour of Smartphone Addicts



The MP3 neck massager adopts dual-drive pulse technology to deeply relieve neck soreness, stiffness, and other issues. With 4 vibration intensity levels, 3 heating levels, and 8 pulse intensity levels, it meets your diverse needs. The voice broadcast function keeps you informed of the massage settings in real time. The 8D massage heads provide wide-area heating. Lightweight and portable, it allows you to relax with a massage anytime, anywhere.

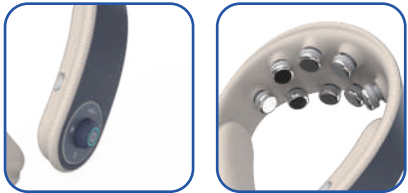
## Intelligent Neck Massager



### MODEL: MP3

#### Product feature

- Long battery life
- Dual pulse technology
- Multiple gear options
- Warm and hot compress



#### Parameter:

Model:MP3	Timer: 15 minutes
Input voltage:5V	Pulse: 8 levels
Rated power:5W	N.W.:170g
Battery capacity:1500mAh	Color:Blue、 White blue



# Massage And Relaxation

Massage Pillow



## MODEL: MP1 Pro

### Product feature

- Multi-part massage
- One-touch operation
- 10-minute smart timer
- Soothing warm compress



### Parameter:

Model:MP1 Pro	Dimension: 370*270*120mm
Input voltage:5V/2A	Timing: 10min
Rated power:23W	N.W.:About 1.25kg
Battery capacity:2000mAh	Color: Orange、Grey



Massage Pillow MP1 PRO combines simulated human kneading techniques with warmheat application technology to bring the ultimate enjoyment of 3D two-way massage. It is specially designed with a neck, shoulder, lumbar and back care program, combine with the 6°+17° ingenious stacked wave design, which can deeply relieve neck and shoulder pressure and bring you total relaxation and comfort.



Dry Smarter. Style Faster.  
Shine Every Time.

ZCY892-A redefines styling with salon-grade performance. With its 1200W turbo motor, it delivers ultra-fast drying at 15m/s while generating 100 million negative ions to eliminate static and tame frizz. The 110,000 rpm high-speed engine ensures sleek, smooth results in minutes. Plus, the smart memory function resumes your last setting—so you can get gorgeous hair faster, every time.

Multifunctional Hair Stick(6 in 1)



MODEL: ZCY892-A

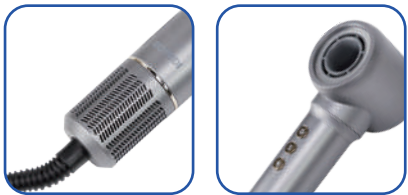
Product feature

- Memory function
- 19m/s wind speed
- 100 million negative ions
- 6 different types of heads



Parameter:

Model:ZCY892-A	Dimension: 48*48*254mm
Voltage:220-240V	Motor speed:110000rpm
Power:1200W	N.W.:About 0.9kg
Frequency:50/60Hz	Color: Silver Gray





Stimulates Growth. Relaxes scalp. Anywhere.



The MG4 Massage Comb combines 660nm red light therapy with EMS and bionic massage to activate scalp cells and promote healthier hair growth. Its gentle heat function enhances serum absorption, while a 2000mAh battery provides up to 300 minutes of cordless use. Lightweight at 350g, it's ideal for daily, portable scalp care.

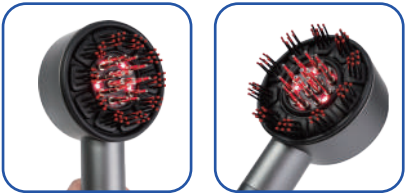
Head Massage Comb



MODEL: MG4

Product feature

- Multiple gear options
- 660nm red light energy
- Hair care and nourishment
- Temperature sensing heating



Parameter:

Model:MG4	Timer: 10 minutes
Input voltage:5V	Speed: 3 levels
Rated power:5W	N.W.:350g
Battery capacity:2000mAh	Color:Dark Gray



# Straighten In One Stroke

6 smart heat levels with digital display. 200M negative ions + 10M plasma dual-care system. 55min runtime (USB/base charging). 15min auto-off + safety lock. Detachable comb head for easy cleaning. 250°C overheat protection. Flight-approved compact design.

## Wireless Hair Straightener



### MODEL: HB3

#### Product feature

- Anti-scalding design
- Cordless + rechargeable
- 6 temperature settings
- 200 million negative ions



#### Parameter:

Model: HB3	Dimension: 199*41*42mm
Input voltage: 5V/2A	Heating element material: MCH
Rated power: 35W	Net weight: 438g
Battery capacity: 3200*2mAh	Color: Pink, Black, Purple



# Hair Health Optimized

110,000rpm brushless motor. 200M negative ions tame frizz for silky strands. NTC smart thermal control chip. 4 heat + 2 speed settings adapt to hair types. 522g lightweight body with prismatic mode indicators. 59dB low-noise operation.

High Speed Hair Dryer



## MODEL: HD04

### Product feature

- Intelligent thermostat
- 4 color light ring
- 200 million negative ions
- Hot and cold air circulation



### Parameter:

Model:HD04	Dimension:278*89.2*68mm
Voltage:220V	Speed: 110,000 rpm
Power:1600W	Net weight:584g
Frequency:50/60Hz	Color:White、Pink、Silver gray





# Hurricane Dry + Silk Finish

110,000rpm motor, equipped with dual power modes (800W/1600W). 200 million negative ions, deeply nourishing hair. Precise air control. Color indicators indicate mode status. 438 grams of super heart disease, one-handed controller

High Speed Hair Dryer



## MODEL: HD06

### Product feature

- 300 million plasma
- 4 dry hair patterns
- 360° rotating nozzle
- Dual power mode, 800/1600W



### Parameter:

Model:HD06	Dimension:70.75*89.7*269.5mm
Voltage:220V	Speed: 110,000 rpm
Power:800/1600W	Net weight:438g
Frequency:50/60Hz	Color:White、 Silver gray





# Pro-Grade Plaque Removal



Natural sweeping vibration technology: Dual-frequency motion (45-60° swing) mimics bass brushing technique. UV sanitizing case + antimicrobial U-shaped DuPont bristles. 6 modes. IPX7 waterproof. Detachable brush head.

## Electric Toothbrush



### MODEL: TX6

#### Product feature

- 60° sweep mode
- Long battery life
- 2-min intelligent timer
- Sterilizing sweeping toothbrush



#### Parameter:

Model:TX6	Dimension:240*26*26mm
Mode:6 Modes	Material: Aluminum alloy + ABS
Power:2.5W	Net weight:124g
Battery capacity:1200mAh	Color:Silver

# Surgical-Grade Flossing

Oral Irrigator



1400 pulses/min deep oral cleaning. 7 customizable modes + 6 nozzles for diverse needs. 300ml tank ensures continuous use. Type-C + 2000mAh Li-ion battery (80-day endurance). Compact body with portable case.



## MODEL: D3 PRO

### Product feature

- 360° rotatable nozzle
- Strong pulse water flow
- 6 nozzles to meet any needs
- Removable water tank for easy cleaning



### Parameter:

Model:D3 Pro	Waterproof rating: IPX7
Voltage:3.7V	Water tank capacity:300mL
Power:8W	Charge Time: 4h
Battery capacity:2000mAh	Color:Blue





# Dynamic Pulse System



0.6mm precision stream targets interdental gaps. 360° rotating nozzle for full coverage. 240ml tank. IPX7 waterproof. 6 specialized tips (daily/special care). Lightweight body with clinic-grade accuracy.

## Portable Oral Irrigator



### MODEL: DE02

#### Product feature

- One-click operation
- 360° rotating nozzle
- IPX7 waterproof rating
- 0.6mm fine water column



#### Parameter:

Model:DE02	Dimension:65.5*50*229 mm
Battery capacity:1400mAh	Mode: 3 modes
Water tank capacity:240mL	N.W.:251g
Waterproof rating: IPX7	Color:White

# 360° Hair Removal



HT1 Pro body shaver is ultra-quiet design for fast and comfortable hair removal. One-touch switch for effortless operation. Built-in front light ensures clear visibility for precise trimming. Detachable blade head for easy cleaning. Adjustable handle glides smoothly to reach every angle—no missed spots! anywhere.

## Body Hair Trimmer



### MODEL: HT1 Pro

#### Product feature

- Front lighting
- One-touch switch
- Removable blade design
- Retractable body design



#### Parameter:

Model: HT1 Pro	Dimension: 209.5*43*30.5 mm
Input voltage: 5V/1A	Battery life: about 100 mins
Rated power: 5W	N.W.: 146g
Charging time: about 120 mins	Color: Silver gray